



© LANNA BLISS

Where Property Finds Life.

"We don't just build structures; we cultivate living, breathing spaces that resonate with the pulse of life itself.
Our approach is an art, a rhythm that dances with the pace of existence."

— Founders of Globestone Developments





Chaikla Dangboon

S.O.S Architects Co., Ltd

Mr. Chaikla (Art) is a talented young architect with S.O.S Architects, a leading architectural firm in Chiang Mai. The firm recently earned the prestigious Award for Attractive Space in the Hotel & Hostel category for their project, Taryn Tara Cafe and Stay. Art's deep passion for community and design has driven his career in architecture, where he specialises in creating homes that blend unique modern architectural design with functional living spaces.

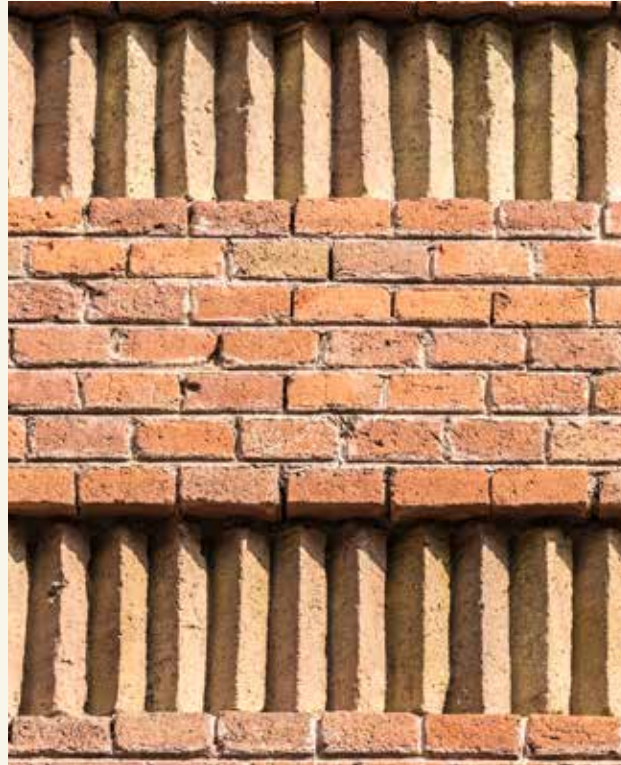
Recognising that homeowners spend significant time at home and often have a passion for collecting furniture in monotone colors like white, grey, and black, Art focuses on designing spaces that offer privacy while maintaining an open and airy feel. His designs allow natural light to flow into spaces that are visually opaque, creating comfortable environments for everyday activities.

One of his recent projects, The Concrete Cave, completed in 2023, was featured in the renowned architectural publication Baan Lae Suan. This project exemplifies his innovative approach to modern residential design.



Lanna Bliss, San Pa Tong, Chiang Mai

Welcome to Lanna Bliss, a sanctuary of luxury nestled in the tranquil outskirts of Chiang Mai, Thailand.



Architect Mr. Chaikla (Art) has imbued the Lanna Bliss villa project for Globestone Developments with a distinctive character, inspired by Chiang Mai's iconic Lanna-Sukhothai Border Wall. The villa's brick pattern is a modern interpretation of this ancient Thai city wall, connecting the design to the city's rich heritage.

The spacious courtyard mirrors the area of the city gates, making it a great spot for kids to play or for outdoor gatherings. It seamlessly connects the garage, which acts as a 'gate,' to the main villa.

At the front, a welcoming terrace leads to the stairs going up to the first floor. Next to the terrace is an outdoor kitchen and barbecue area called 'Harn Narm,' meaning warm welcome for visitors or for relaxing.

We also have a 'Tern,' a raised platform that connects the inside of the villa to the terrace, providing a cozy place to relax and enjoy views of the courtyard or pool.

Throughout the villa, we've modernized ancient design elements to blend historical inspiration with contemporary living, making it a truly distinctive part of the Lanna Bliss project.









Disclaimers: The property images are CGIs for illustrative purposes only and may not accurately represent the final product. While all information provided in this brochure is deemed reliable, it is not guaranteed and should be independently verified. Specifications, features, and amenities are subject to change without notice and may vary from those shown. The developer reserves the right to make modifications and changes to the design and layout of the property as required. Prices and availability are also subject to change and may vary based on market conditions. This brochure does not constitute an offer or contract, and all sales are subject to the terms and conditions set forth in the sales agreement.



www.globestonedevelopments.com